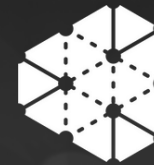


CriticalSecurity
security today



SAULĖTEKIO SLĖNIO
SKAITMENINIŲ INOVACIJŲ CENTRAS



SAULĖTEKIO SLĖNIO
MOKSLO IR TECHNOLOGIJŲ PARKAS



Kuriame
Lietuvos ateitį
2014–2020 metų
Europos Sąjungos
fondų investicijų
veiksmų programa

BUSINESS DIGITALISATION

FOSTER SUNRISE VALLEY DIGITAL INNOVATION
HUB COMPETENCIES

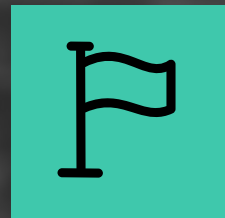
CONTACT US

+370 600 16 488 

<https://sunrisevalleydih.lt> 

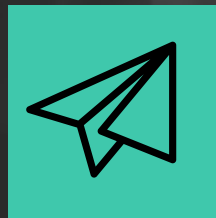
info@sunrisevalleydih.lt 

SERVICE PORTFOLIO



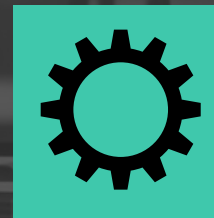
PENETRATION TESTING

Penetration testing allows to verify the state of security of external or internal perimeter of an organization



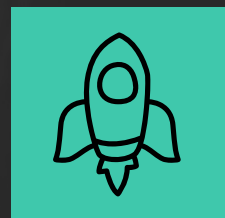
TEST WEB APPLICATION

Security audits of WEB applications using manual approach



MOBILE APP SECURITY

Our testing methodology covers OS and Android applications as well as back-end systems



SOURCE CODE REVIEW

Source code of custom applications can be examined using SAST tools and manual review by the expert



SOCIAL ENGINEERING

Human factor can be included into penetration test or conducted as a separate activity



IOT SECURITY AUDITS

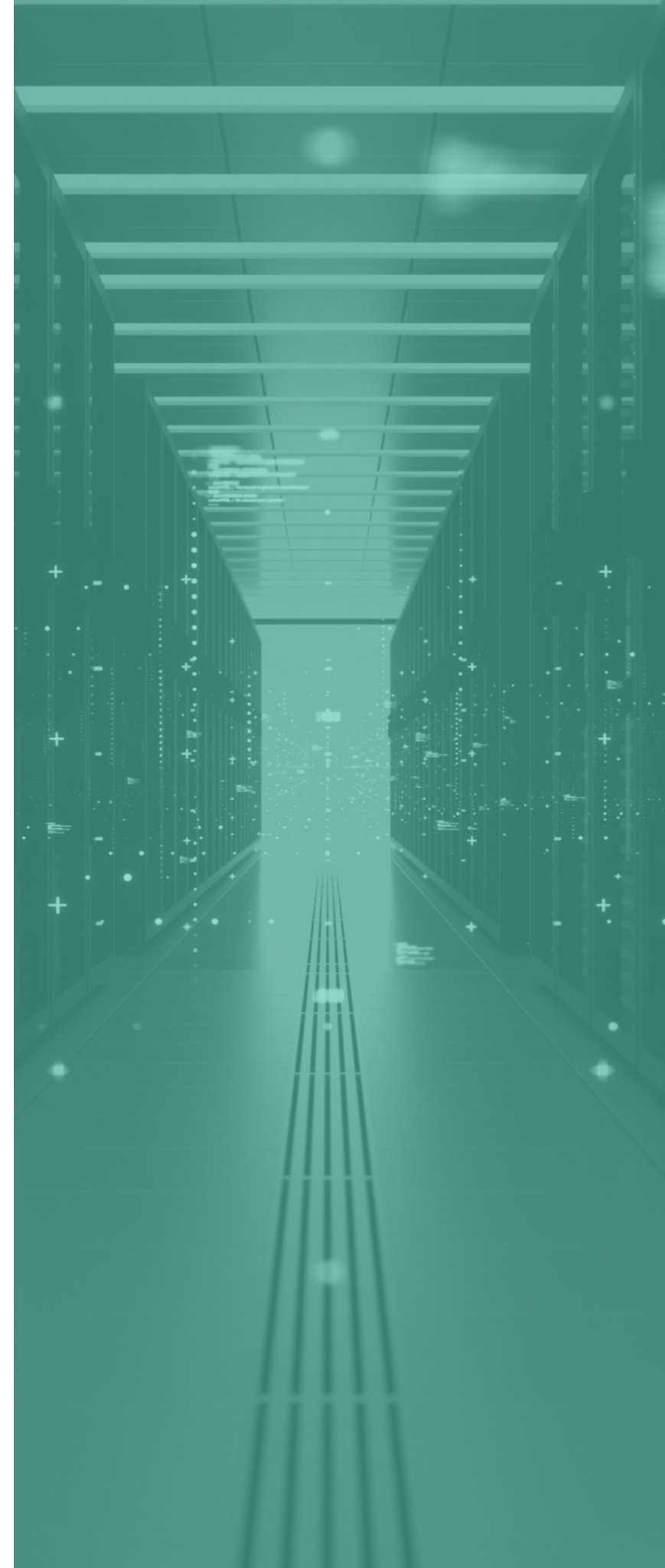
Firmware and communications mechanisms of IoT devices are covered during such test

PENETRATION TESTING

Black-box penetration test is performed on a network or application without any additional knowledge of the target and organization itself.

Grey-box penetration test approach means that an assessment team will have partial knowledge of the networks' or applications' inner-workings.

White-box assessment team will have knowledge of the internal structure of a network or application in order to better uncover potential vulnerabilities. This type of test is often called a glass box test due to the full visibility that the testers will have.

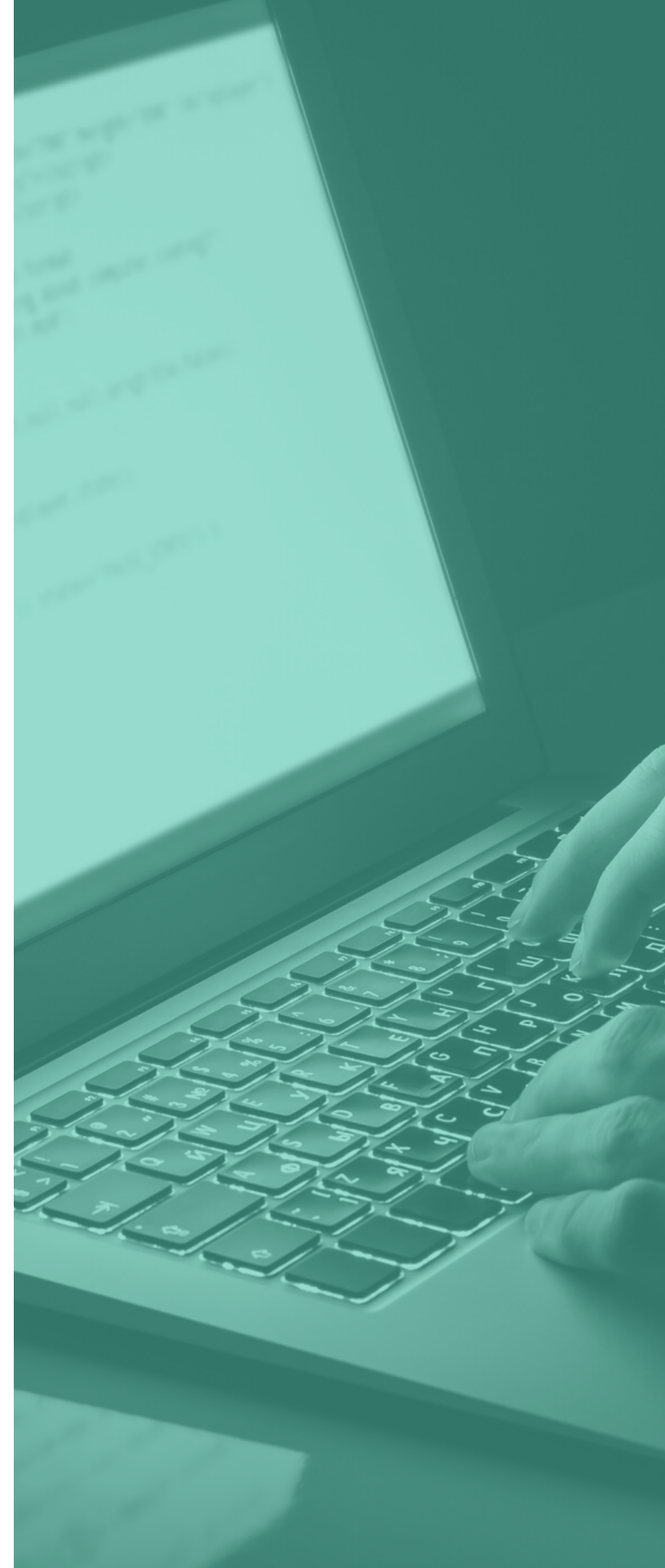


WEB APPLICATION TESTS

In depth analysis. The WEB application is subjected to a range of test patterns and payloads corresponding to multiple vulnerability classes as categorized in the OWASP testing methodology. The goal is to identify as many as possible defects in a timeframe given.

Detailed report. Report provides information on what security measures can be applied to further improve the quality of an application.

OWASP v4



MOBILE APP SECURITY

Mobile application security audit can be conducted using black-box or glass-box approaches. Providing source code to the tested reveals inner workings of the application. Audit covers:

- iOS/Android (or other platform) apps
- Back-end systems and related APIs
- Usually conducted in accordance with OWASP Mobile Security Testing Guidelines methodology and OWASP Mobile Application Security Verification standard

OWASP MASVS



OWASP MSTG



SOURCE CODE REVIEW

Source code reviews allow to identify more vulnerability classes in comparison to black-box tests due to visibility of inner workings and interconnections between various software components.

In addition, Static Application Security Testing (SAST) tools are used to identify low-hanging fruits and ensure maximum coverage of source code provided



SOCIAL ENGINEERING

HUMANS ARE THE WEAKEST LINK IN THE
INFORMATION SECURITY CHAIN

AWARENESS

Social engineering campaigns are a tool to increase awareness in an organization

SCENARIOS

Our experts will prepare social engineering attack scenarios that fit your organization

REPORT

The results are in a form of a report with all the collected user data such as login credentials

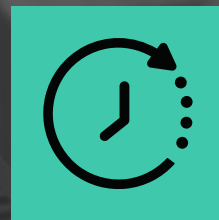
IOT AND HARDWARE SECURITY AUDITS

CHANGING THREAT LANDSCAPE



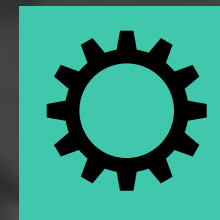
FIRMWARE IS KEY

Outdated components contain security vulnerabilities that can be exploited by attackers for their own purposes – such as running an IoT botnet.



INCREASING THREAT

Growing number of Internet of Things (IoT) devices currently means that organizations are facing additional new cybersecurity risks associated with IoT without realizing it.



IOT SECURITY AUDIT

Software components and communication with the cloud is audited and suggestions for improving of handling and transmission of personal data encryption are prepared.

CLOUD SECURITY AUDITS

AWS. AZURE. GCP. ORACLE

Cloud solutions have a range of in-built security features - cloud security audit ensures that security features are configured properly and best practices are followed.

Cloud security audit is done in a transparent way – access to the cloud environment and architecture documentation is a must



KNOWLEDGE IS POWER



Our cyber security consultants have years of experience in providing security assurance services. Most of the team members hold relevant certifications and have proven trackrecord in delivery of cyber security projects

SUNRISE VALLEY DIH SERVICES

The project is partially financed by the funds of the European regional development funds according to the "Skaitmeniniai inovacijų centrai" call no. 01.2.1-LVPA-K-857-01.

SSSIC can offer a total of over 40 innovation support and digital innovation services. Companies that have used SVDIH services will have the opportunity to recover up to 50% of their funds using de-minimis state aid.

Sunrise Valley Science and Technology Park has formed an group of innovation providers, and together with nine organizations have started implementing the project "Development of activities and services of Sunrise Valley Digital Innovation Hub". The project aims to achieve the following goals:

- To create awareness about digitalisation benefits and implementation possibilities.
- Increase the competence and infrastructure capacity.
- Expand collaboration relations.

CriticalSecurity
security today



SAULĖTEKIO SLĖNIO
SKAITMENINIŲ INOVACIJŲ CENTRAS



SAULĖTEKIO SLĖNIO
MOKSLO IR TECHNOLOGIJŲ PARKAS



Kuriame
Lietuvos ateitį
2014–2020 metų
Europos Sąjungos
fondų investicijų
veiksmų programa

CONTACT US

+370 600 16 488 
<https://sunrisevalleydih.lt> 
info@sunrisevalleydih.lt 